

NOTES (UNLESS OTHERWISE SPECIFIED):

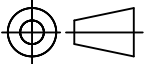
1. BOARD FABRICATION METHODS MUST COMPLY WITH:
FABRICATE IN ACCORDANCE WITH IPC-6018B, per IPC-6011, CLASS 2.
2. ARTWORK FORMAT: GERBER 274X
GERBER DATA SUPPLIED WITH DESIRED FINAL TRACE WIDTHS. PROCESS
COMPENSATION TRACE WIDTH ADJUSTMENTS TO BE DONE BY PCB FABRICATOR
3. MATERIAL:
NUMBER OF LAYERS: 2 LAYERS
METAL 1 0.5oz. (PLATE TO 1.0oz)
CORE 1: ROGERS 6035HTC, .010in. THICK
METAL 2 0.5oz. (PLATE TO 1.0oz)
SOLDERMASK TOP: LPI (LIQUID PHOTO-IMAGEABLE), GREEN OR LDI (LASER DIRECT IMAGEABLE), GREEN. MAX FINISH
THICKNESS OF SOLDERMASK TO BE 0.001in.
SILKSCREEN TOP: HIGH TEMPERATURE, NON-CONDUCTIVE, WHITE EPOXY BASED INK.
4. FINISH PLATING:
METAL 1(TOP) AND METAL 2(BOTTOM):
ELECTROLYTIC FLASH GOLD
NICKEL PLATE per QQ-N-290, CLASS 1, GRADE G, 200µin. (5µm)
GOLD PLATE per ASTM B 488, TYPE III, CODE A, 3-10µin. (0.08-0.25µm)
5. FINISHED BOARD THICKNESS: (0.013in) ±.003IN.
6. COPPER IS PULLED BACK PER GERBER DATA FROM EDGE OF BOARD ON METAL 1 (TOP) AND METAL 2 (BOTTOM).
7. TOLERANCE:
A. PC BOARD OUTLINE: ±0.002in.
B. POSITION OF INTERNAL CUTOUT RELATIVE TO PCB OUTLINE ± .002.
8. METALIZATION MUST BE FREE FROM CONTAMINATION AND DEBRIS.
9. BURRS SHALL NOT EXCEED 0.002in.
10. VIA PLATING/FILLING:
ALL PLATED THRU HOLES TO BE PLATED TO 0.0007in. MIN. THICKNESS.
11. SINGULATION: EXTERNAL OUTLINE AND INTERNAL CUTOUTS ARE TO BE COMPLETED
VIA OPTICAL (LENZ) ROUTING OR LASER. LASER ROUTING IS AUTHORIZED ONLY IF IT
YIELDS A WIRE-BONDABLE SURFACE ADJACENT TO THE LASER-SAWN EDGE.
12. FINISHED Cu THICKNESS TO BE .0018 ± .0005.
13. CONDUCTOR WIDTHS AND SPACING TO BE WITHIN 0.001in. OF CAD DATABASE.
14. SOLDERMASK IN PLATED-THRU HOLES IS ACCEPTABLE AS LONG AS IT DOES NOT EXIST ON BACKSIDE OF BOARD.
15. ALL HOLES TO BE LOCATED WITHIN ±0.003 OF CAD DATABASE.
16. NO VENDOR MARKING OR SERIALIZATION ALLOWED.
17. DELIVER BOARDS BAGGED AS SINGLES
18. NO ELECTRICAL TEST NEEDED.

REFERENCE NOTE: Uses QPA2211D 6035HTC CAL

THIS DOCUMENT IS CONFIDENTIAL AND REPRESENTS
PROPRIETARY INFORMATION, THE PROPERTY OF QORVO
AND SHALL NOT BE REPRODUCED IN ANY MANNER
NOR USED FOR ANY PURPOSE WHATSOEVER,
EXCEPT AS SPECIFIED IN WRITING BY QORVO

UNLESS OTHERWISE
SPECIFIED: DIMENSIONS
ARE IN INCHES

TOLERANCES
.XX = ±.01
.XXX = ±.005
.XXXX = ±.0010
ANGLES = ± 0.5°
INTERPRET DRAWING
PER ANSI/ASME Y14.5 - 2009




THIRD ANGLE PROJECTION
DO NOT SCALE DRAWING

SAP NO. 282678

APPROVAL AND RELEASE
RECORDS MAINTAINED IN PDE

DESIGNER O.MARRUFO
ENGR. M.ROBERG
MFG
MANAGER
Q.A.
CAGE CODE

DATE 11/21/16
11/21/16
PDE CONTROLLED
1CVM1



TITLE:
PCB, TGA2962

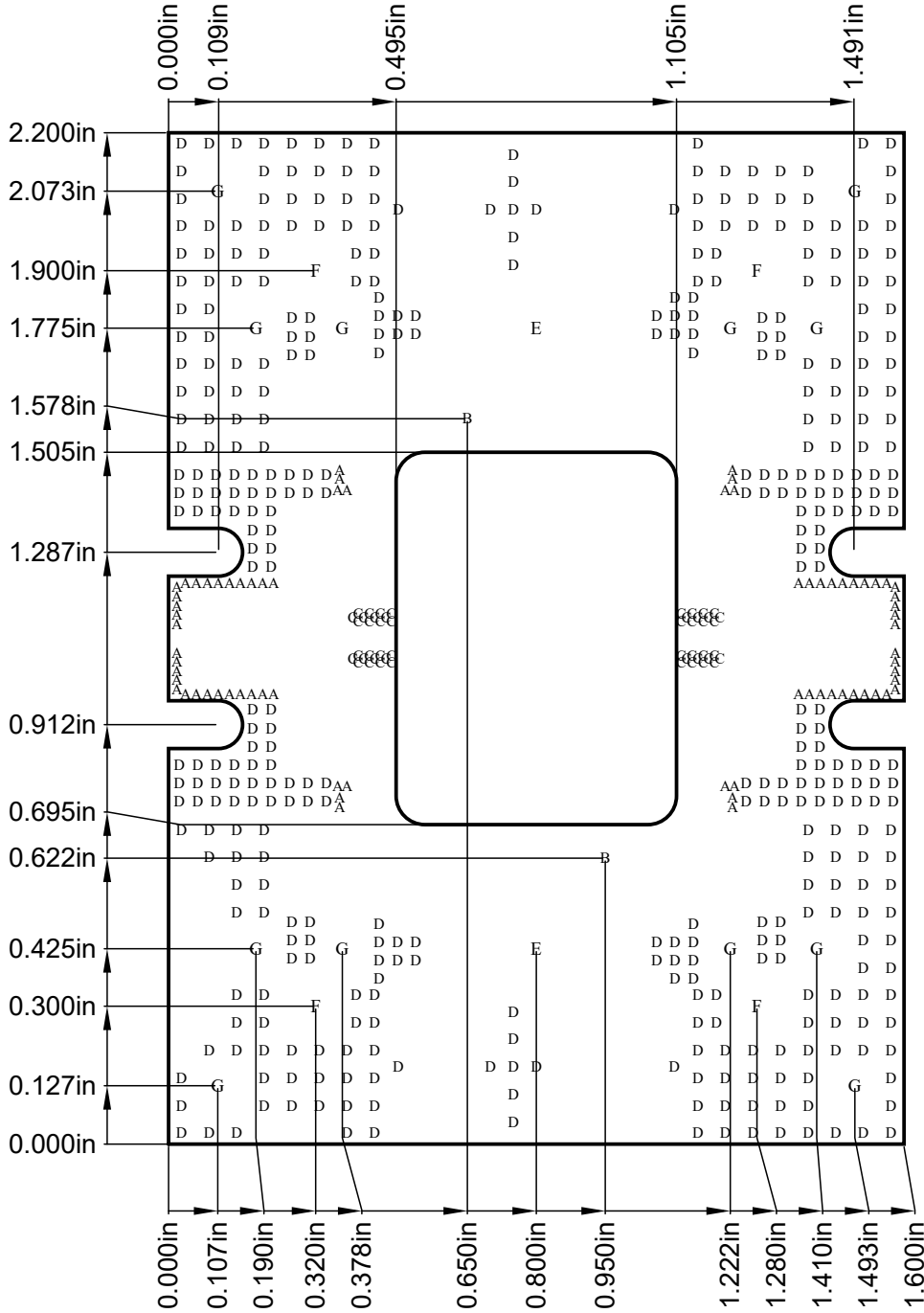
SIZE B

DWG. NO. TGA2962-4000

REV. A

SCALE: 1:1 SHEET 1 OF 4

REVISION HISTORY			
REV	DESCRIPTION	DATE	APPROVAL
A	NEW RELEASE	10/17/18	O.MARRUFO



Layer Stack Legend (Copper Thickness is Finished Copper Thickness)

Material

Layer

Thickness

Dielectric Material

Type

Silkscreen_Top

Legend

Surface Material

Soldermask_Top

0.10mil

Solder Resist

Solder Mask

Copper

Metal1_Top

1.40mil

Signal

Core

10.00mil

ROGERS 6035HTC

Dielectric

Copper

Metal2_Bot

1.40mil

Signal

Total thickness: 12.90mil

Drill Table

SYMBOL	COUNT	HOLE SIZE	PLATED	VIA / PAD	DRILL LAYER PAIR
C	48	8.00(0.20)	Plated	Via	Metal1_Top - Metal2_Bot
A	72	12.00(0.30)	Plated	Via	Metal1_Top - Metal2_Bot
D	414	20.00(0.51)	Plated	Via	Metal1_Top - Metal2_Bot
B	2	70.00(1.78)	Non-Plated	Pad	Metal1_Top - Metal2_Bot
G	12	96.00(2.44)	Plated	Pad	Metal1_Top - Metal2_Bot
F	4	125.00(3.18)	Plated	Pad	Metal1_Top - Metal2_Bot
E	2	125.00(3.18)	Non-Plated	Pad	Metal1_Top - Metal2_Bot

THIS DOCUMENT IS CONFIDENTIAL AND REPRESENTS PROPRIETARY INFORMATION, THE PROPERTY OF QORVO AND SHALL NOT BE REPRODUCED IN ANY MANNER NOR USED FOR ANY PURPOSE WHATSOEVER, EXCEPT AS SPECIFIED IN WRITING BY QORVO

SIZE	CAGE CODE	DWG. NO.	REV.
B	1CVM1	TGA2962-4000	A
SCALE:	1:1	SHEET 2 OF 4	

4

3

2

1

D

D

C

C

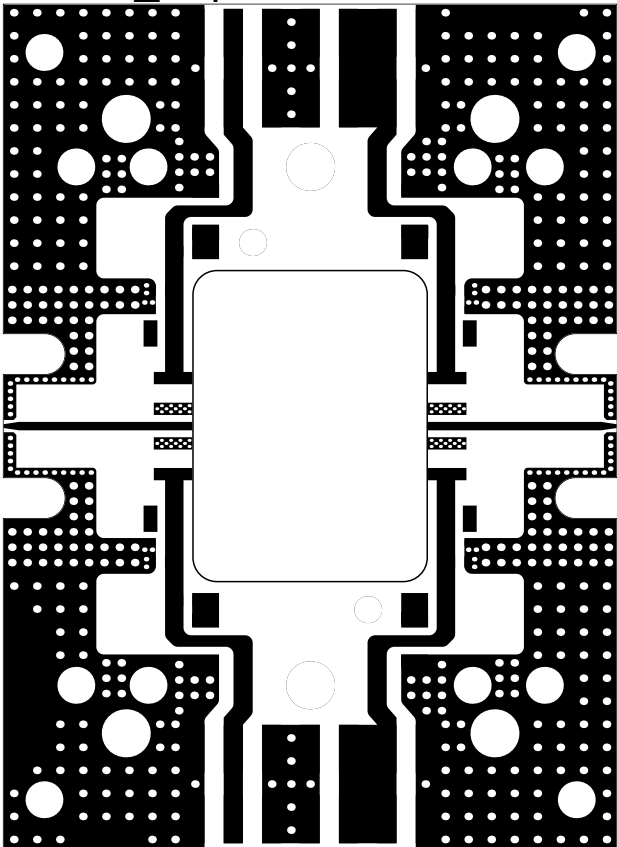
B

B

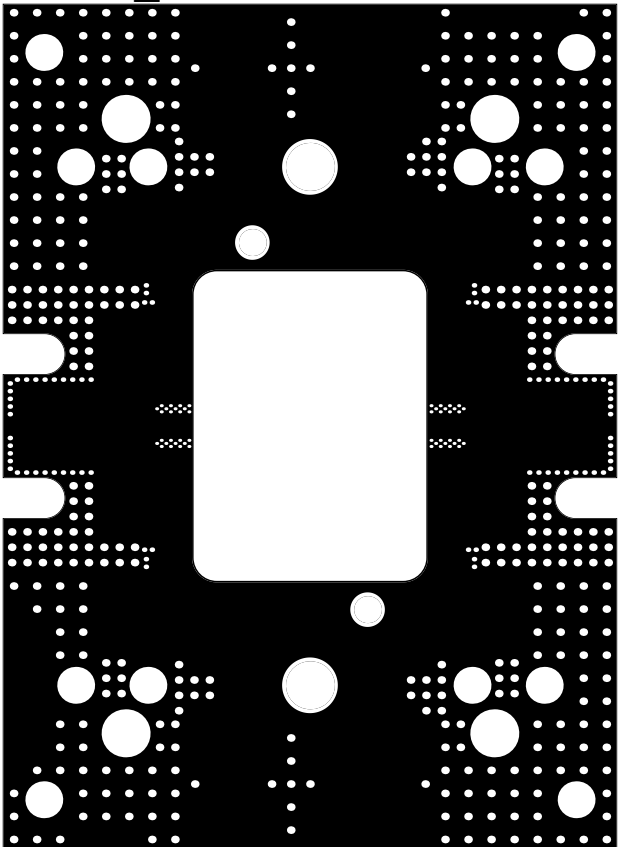
A

A

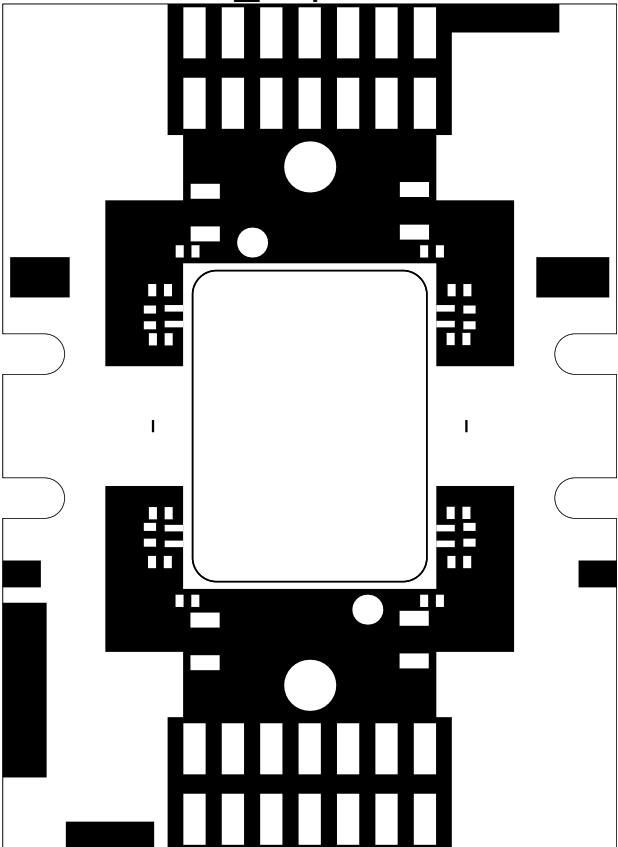
Metal1_Top



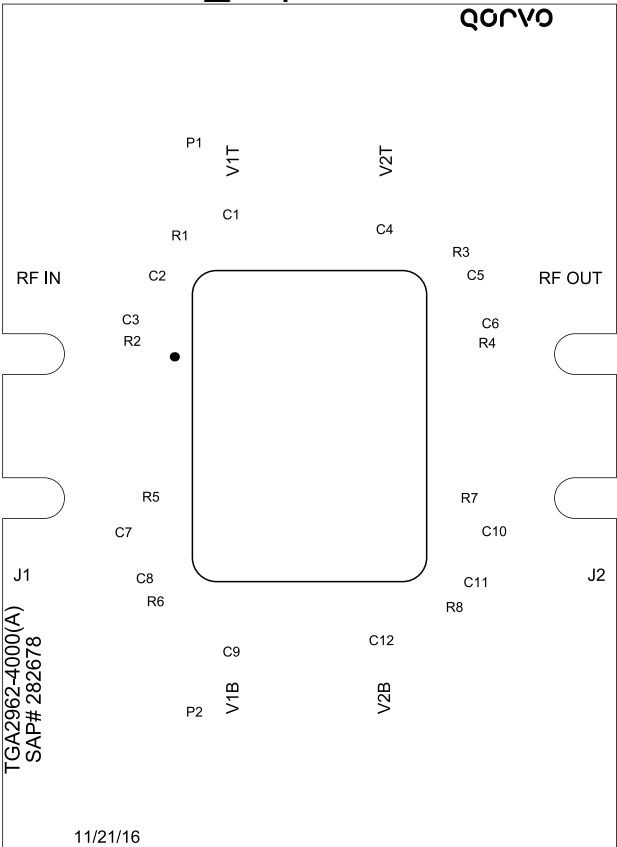
Metal2_Bot



Soldermask_Top



Silkscreen_Top



THIS DOCUMENT IS CONFIDENTIAL AND REPRESENTS
PROPRIETARY INFORMATION, THE PROPERTY OF QORVO
AND SHALL NOT BE REPRODUCED IN ANY MANNER
NOR USED FOR ANY PURPOSE WHATSOEVER,
EXCEPT AS SPECIFIED IN WRITING BY QORVO

SIZE	CAGE CODE	DWG. NO.	REV.
B	1CVM1	TGA2962-4000	A
SCALE: 1:1		SHEET 3 OF 4	

4

3

2

1

4

3

2

1

D

D

C

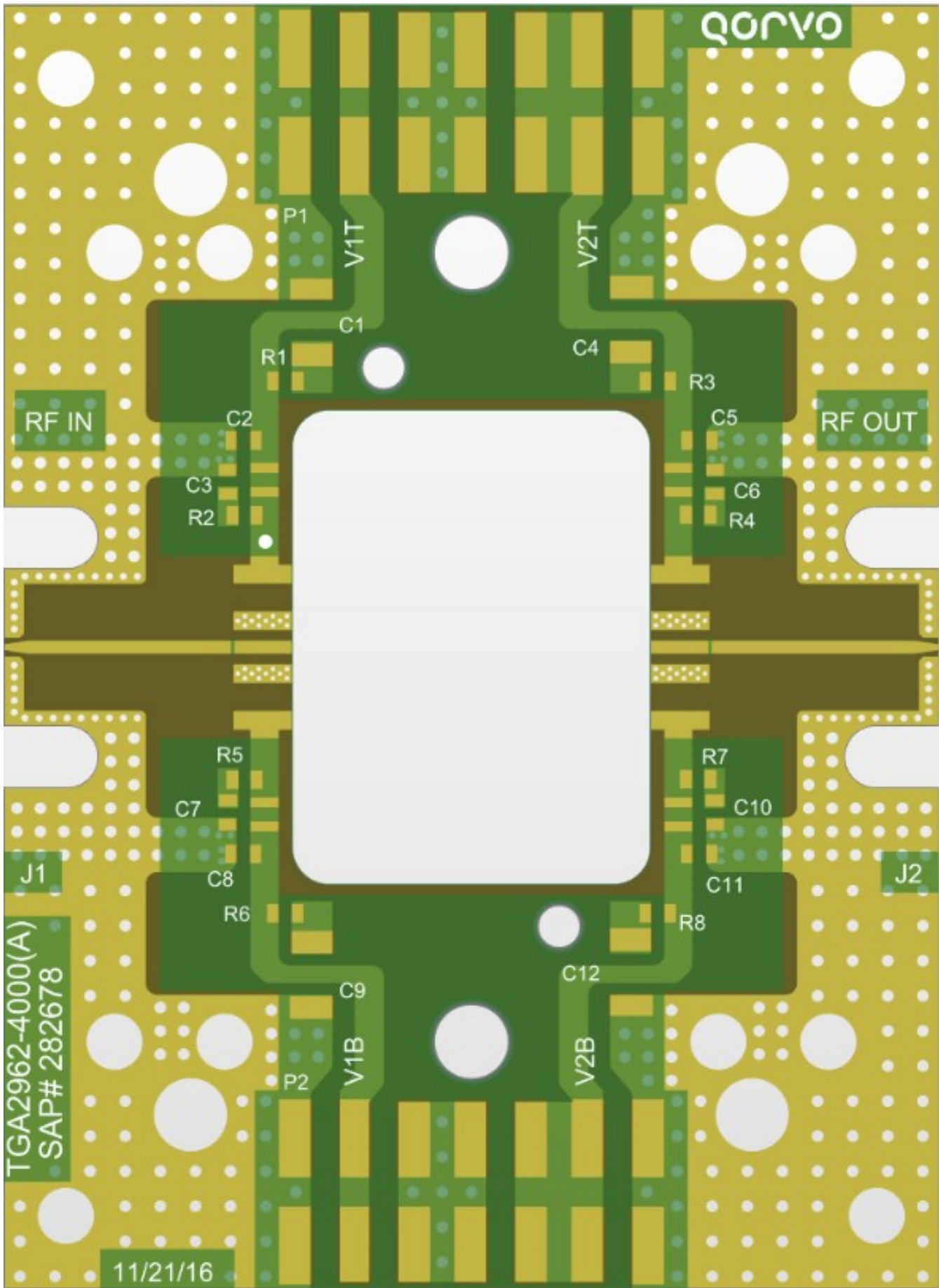
C

B

B

A

A



THIS DOCUMENT IS CONFIDENTIAL AND REPRESENTS PROPRIETARY INFORMATION, THE PROPERTY OF QORVO AND SHALL NOT BE REPRODUCED IN ANY MANNER NOR USED FOR ANY PURPOSE WHATSOEVER, EXCEPT AS SPECIFIED IN WRITING BY QORVO

SIZE	CAGE CODE	DWG. NO.	REV.
B	1CVM1	TGA2962-4000	A
SCALE: 1:1		SHEET 4 OF 4	

4

3

2

1